

Free Spirit

Aster-Seabreeze Quilt

Featuring *Roar!* and *Tula Pink Solids* by
Tula Pink

Sweet beasts. These tender triceratops are steppin' out in trendy tones, courtesy of Tula Pink's delightful *Roar!* collection. Fussy-cut borders and center square make for easy-peasy piecing and a quick-to-make quilt!

Collection:	<i>Roar!</i> and <i>Tula Pink Solids</i> by Tula Pink
Technique:	Pieced
Skill Level:	Advanced Beginner
Finished Size:	59 ³ / ₈ " x 59 ³ / ₈ " (1.51m x 1.51m)

All possible care has been taken to ensure the accuracy of this pattern. We are not responsible for printing errors or the manner in which individual work varies. Please read the instructions carefully before starting this project. If kitting, it is recommended a sample is made to confirm accuracy.

Project designed by Tula Pink | Tech edited by Alison M. Schmidt

Fabric Requirements

DESIGN	COLOR	ITEM ID	YARDAGE
(A) Gift Rapt	Mint	PWTP224.MINT	¾ yard (0.69m)
(B) Stargazer	Storm	PWTP228.STORM*	¾ yard (0.69m)
(C) Dinosaur Eggs	Storm	PWTP230.STORM	⅜ yard (0.34m)
(D) Tiny Dots	Meadow	PWTP185.MEADOW	⅝ yard (0.57m)
(E) Meteor Shower	Storm	PWTP226.STORM	2 yards (1.83m)
(F) Dinosaur Eggs	Mint	PWTP230.MINT	¼ yard (0.23m)
(G) Designer Essential Solid	Manatee	CSFSESS.MANAT	1¼ yards (1.14m)
(H) Tula Pink Designer Essential Solid	Sea Breeze	CSFSESS.SEABR	1 yard (0.91m)

* includes binding

Backing (Purchased Separately)

44" (1.12m) wide

Dinosaur Eggs

OR

108" (2.74m) wide

Fairy Dust XL

Storm PWTP230.STORM 4 yards (3.66m)

Cotton Candy QBTP011.COTTONCANDY 2 yards (1.83m)



(A)

(B)

(C)



(D)

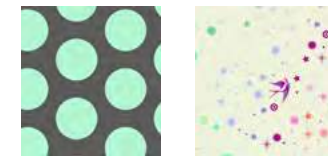
(E)

(F)



(G)

(H)



Backing

44"

Backing

108"

Additional Recommendations

- 100% cotton thread in colors to match
- 68" x 68" (1.73m x 1.73m) batting

Cutting

WOF = Width of Fabric

LOF = Length of Fabric

Note: *Cut in the order given for best use of fabric. Handle on-point square and cut triangles carefully, as bias edges will be stretchy.*

Fabric A, fussy cut:

(1) 11" on-point square, centered on a motif of your choice

Fabric B, cut:

(2) 2¼" x WOF; subcut
 (2) 2¼" x 14½" rectangles
 (2) 2¼" x 11" rectangles
(7) 2½" x WOF for binding

Fabric C, cut:

(1) 7⅞" x WOF; subcut
 (4) 7⅞" squares, then cut each square once diagonally, from corner to corner, to make (8) triangles.

Fabric D, cut:

(1) 6⅜" x WOF; subcut
 (2) 6⅜" squares
 (2) 5⅞" squares
 Cut each 6⅜" square twice diagonally to make (8) small triangles.
 Cut each 5⅞" square once diagonally to make (4) large triangles.
(4) 2¼" x WOF; subcut
 (20) 2¼" x 4" rectangles
 (32) 2¼" squares

Fabric E, cut:

(2) 7½" x LOF, fussy cut centered on border prints on either side of yardage; subcut
 (4) 7½" x 28½" outer borders

From the remaining interior print, cut:

(4) 4" squares
(4) 2¼" x 7½" rectangles
(40) 2¼" squares

Fabric F, cut:

(1) 7½" x WOF; subcut
 (4) 7½" squares

Fabric G, cut:

(4) 5½" x WOF; subcut
 (24) 5½" squares
(2) 8¼" x WOF; subcut
 (6) 8¼" squares. Cut each square twice diagonally, to make
 (24) triangles.

Fabric H, cut:

(6) 5½" x WOF; subcut
 (36) 5½" squares

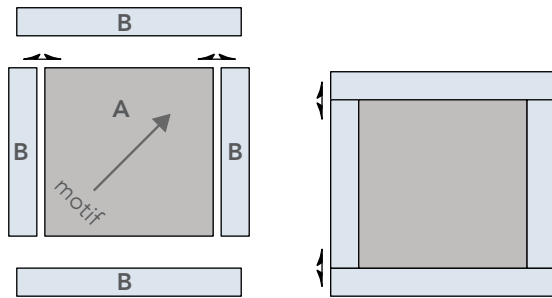
Instructions

Note: All seam allowances are $\frac{1}{4}$ " unless otherwise noted. Sew pieces right sides together. Press seam allowances open unless otherwise indicated.

Make the Center Block

1. Sew $2\frac{1}{4}$ " x 11" **Fabric B** rectangles to opposite sides of the **Fabric A** square (**Fig. 1**). Press. Sew $2\frac{1}{4}$ " x $14\frac{1}{2}$ " **Fabric B** rectangles to the two remaining sides of the square. Press.

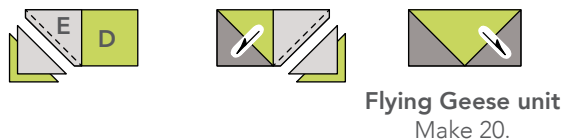
Fig. 1



Make the Star Blocks

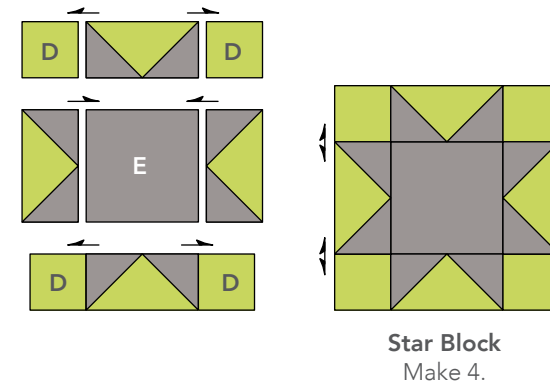
2. Draw a diagonal line from corner to corner on the wrong side of each $2\frac{1}{4}$ " **Fabric E** square. Noting the orientation of the drawn line, place one square right sides together on one end of a $2\frac{1}{4}$ " x 4" **Fabric D** rectangle (**Fig. 2**). Sew along the marked line. Trim the excess corner fabric, leaving a $\frac{1}{4}$ " seam allowance. Press the triangle open. Repeat to add a second triangle to the opposite end of the rectangle as shown. Make a total of (20) Flying Geese units.

Fig. 2



3. Arrange (4) $2\frac{1}{4}$ " **Fabric D** squares, (4) Flying Geese units, and (1) 4" **Fabric E** square in three rows of three elements each, as shown (**Fig. 3**). Sew the elements in each row together along adjacent edges. Press the seam allowances toward the squares. Sew the rows together along adjacent edges. Press. Make a total of (4) Star Blocks (7 " x 7 " finished).

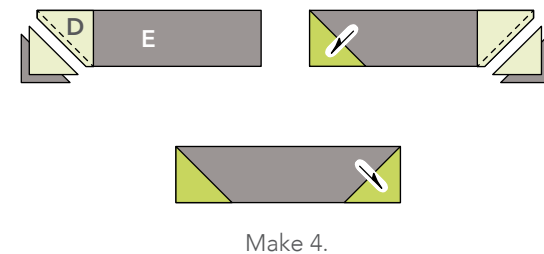
Fig. 3



Make the Half-Star Blocks

4. Draw a diagonal line from corner to corner on the wrong side of (8) $2\frac{1}{4}$ " **Fabric D** squares. Noting the orientation of the drawn line, place one marked square right sides together on one end of a $2\frac{1}{4}$ " x $7\frac{1}{2}$ " **Fabric E** rectangle (**Fig. 4**). Sew along the marked line. Trim the excess corner fabric, leaving a $\frac{1}{4}$ " seam allowance. Press the triangle open. Repeat to add a second triangle to the opposite end of the rectangle as shown. Make a total of (4) units.

Fig. 4



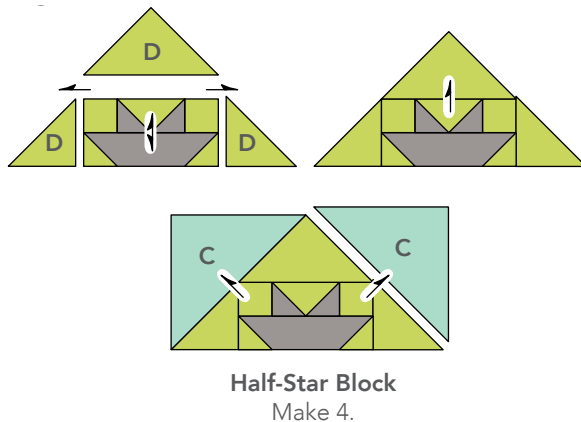
5. Sew a 2¼" **Fabric D** square to each short end of the remaining (4) Flying Geese units (**Fig. 5**). Press.

Fig. 5



6. Noting orientations, sew one step 4 and one step 5 unit together along one long edge (**Fig. 6**). Press. Sew the short side of a **Fabric D** small triangle to each short end of the joined units. Press. Center and sew the long edge of a **Fabric D** large triangle to the upper edge of the unit. Press. Sew the long edge of two **Fabric C** triangles to the short sides of the unit. Press. Make a total of (4) Half-Star blocks (14" x 7" finished).

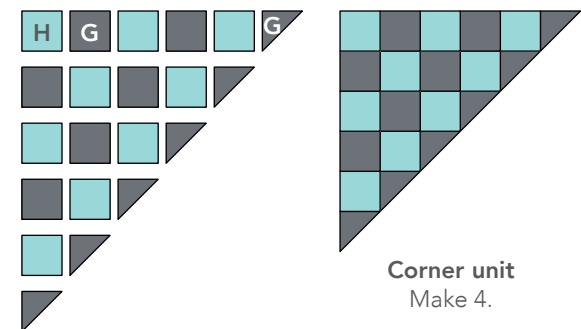
Fig. 6



Quilt Top Assembly

7. Referring to the **Quilt Layout** diagram (page 6) for block orientation, sew a Half-Star Block to two opposite sides of the Center Block. Press. Sew a Star Block to each end of the two remaining Half-Star Blocks. Press. Sew one joined unit to the upper edge, and the other to the lower edge of the quilt center. Press.
8. Noting the fabric print direction of the 7½" x 28½" **Fabric E** borders, sew two borders to opposite sides of the quilt center. Press the seam allowances toward the borders. Sew a 7½" **Fabric F** square to each end of the two remaining **Fabric E** borders, noting the orientation of the squares if you chose to fussy cut them. Press the seam allowances toward the **Fabric E** borders. Sew one **F/E** border to the upper edge, and the other to the lower edge to complete the quilt center. Press.
9. Arrange (9) **Fabric H** squares, (6) **Fabric G** squares, and (6) **Fabric G** triangles in (6) rows, as shown (**Fig. 7**). Sew the squares in each row together along adjacent edges. Press the seam allowances in opposite directions from row to row. Sew the rows together along adjacent edges. Press the seam allowances in one direction. Make a total of (4) triangular corner units.

Fig. 7



- Center and sew the long edges of two triangular corner units to opposite sides of the quilt center. Press. Center and sew the two remaining corner units to the remaining sides of the quilt center to complete the quilt top. Press.

Finishing

- Sew together the (7) 2½" **Fabric B** binding strips end-to-end using diagonal seams. Press the seams open. Press the binding strip in half wrong sides together.
- Layer the backing (wrong side up), batting, and quilt top (right side up). Baste the layers together and quilt as desired. Trim excess batting and backing even with the quilt top after quilting is completed.
- Leaving an 8" tail of binding, sew binding to top of quilt through all layers matching all raw edges. Miter corners. Stop approximately 12" from where you started. Lay both loose ends of binding flat along quilt edge. Where these two loose ends meet, fold them back on themselves and press to form a crease. Using this crease as your stitching line, sew the two open ends of the binding together right sides together. Trim seam to ¼" and press open. Finish sewing binding to quilt.
- Turn the binding to the back of the quilt and hand stitch in place.

Quilt Layout

